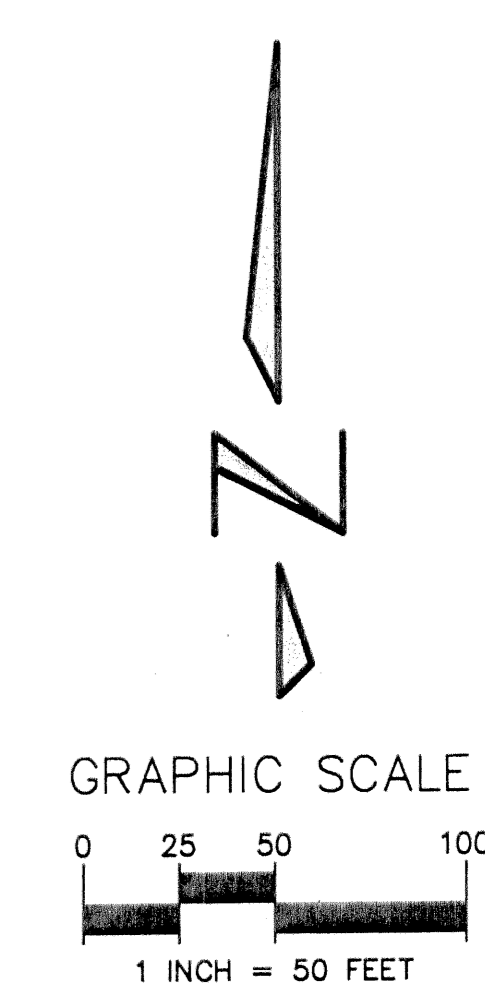
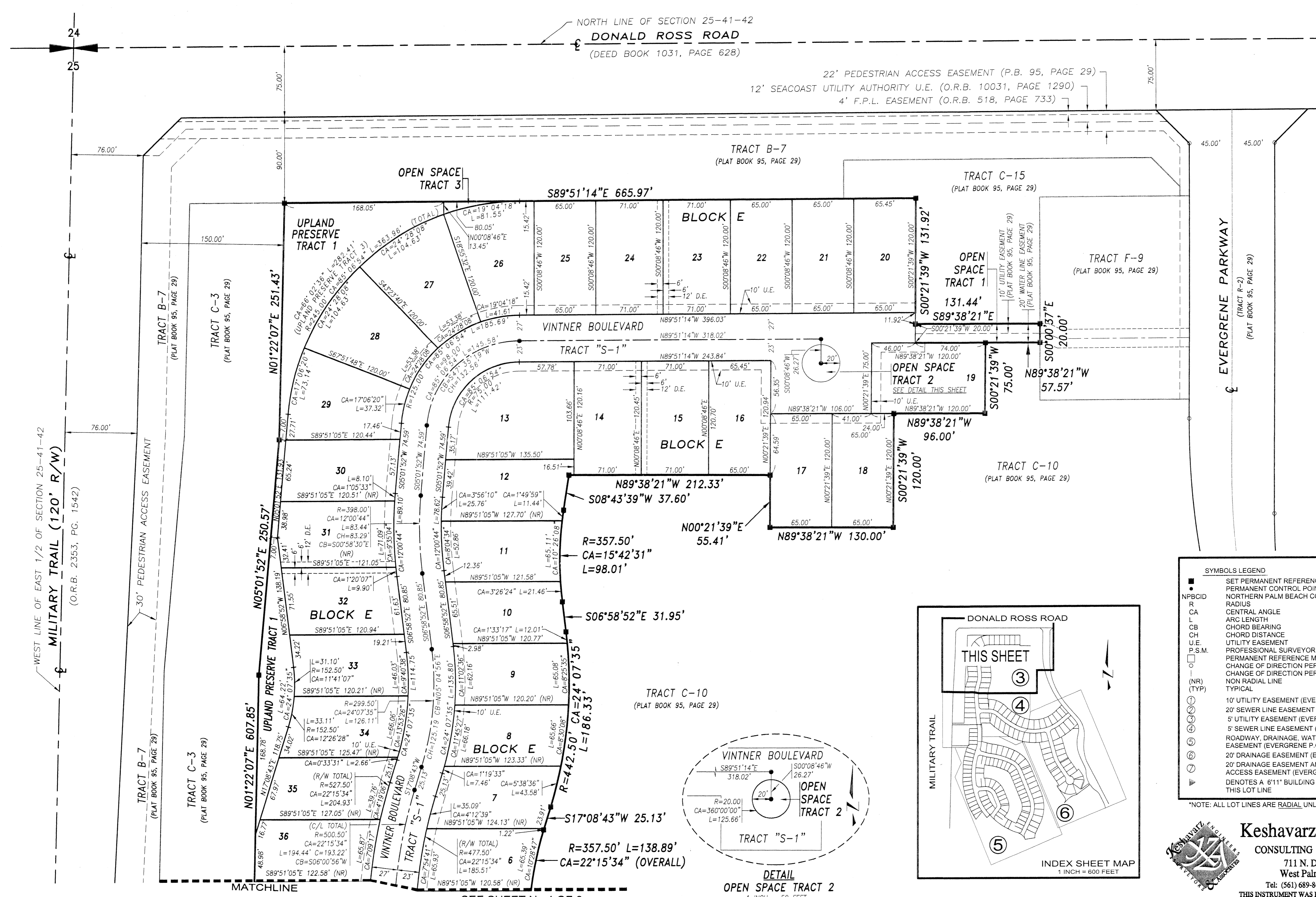


EVERGRENE P.C.D. PLAT SIX

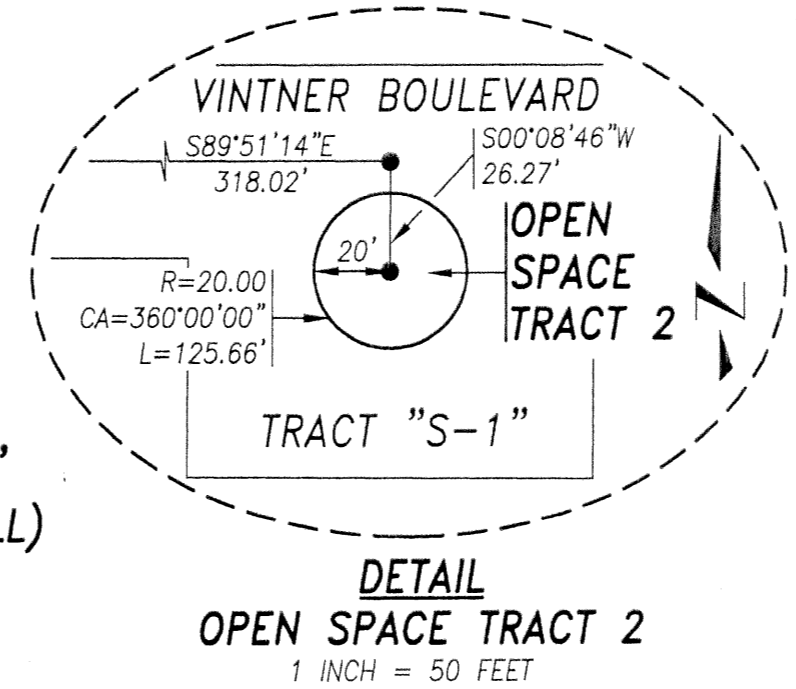
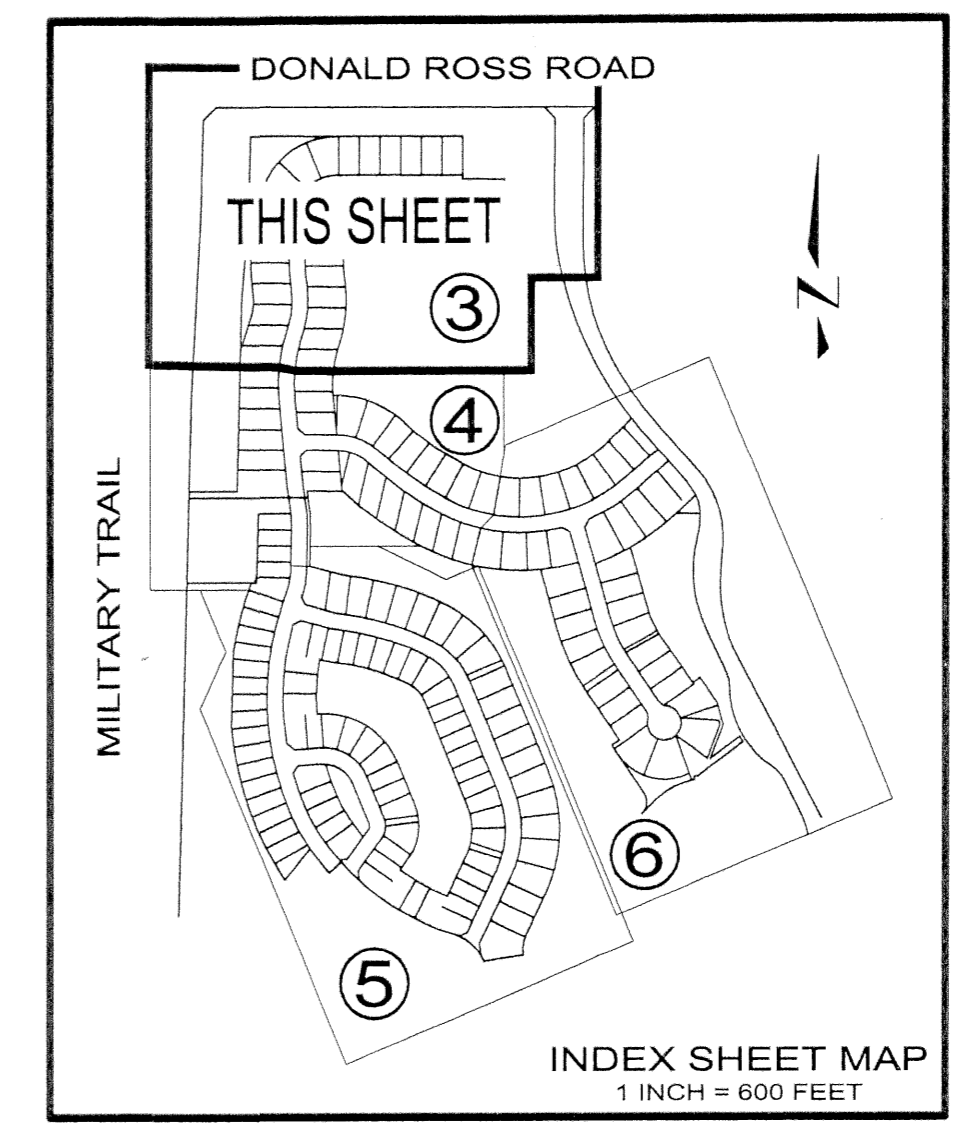
A REPLAT OF TRACT F-8 AND WATER MANAGEMENT TRACT WM-5, EVERGRENE PLAT TWO AS RECORDED IN PLAT BOOK 95, PAGES 29 THROUGH 54 INCLUSIVE, PUBLIC RECORDS OF PALM BEACH COUNTY, FLORIDA LYING IN THE EAST ONE-HALF OF SECTION 25, TOWNSHIP 41 SOUTH, RANGE 42 EAST, CITY OF PALM BEACH GARDENS, PALM BEACH COUNTY, FLORIDA
SHEET No. 3 OF 6 MARCH 2003



SYMBOLS LEGEND

- SET PERMANENT REFERENCE MONUMENT (P.R.M.) "L.B.4897"
- PERMANENT CONTROL POINT (P.C.P)
- NPBCID NORTHERN PALM BEACH COUNTY IMPROVEMENT DISTRICT
- R RADIUS
- CA CENTRAL ANGLE
- L ARC LENGTH
- CB CHORD BEARING
- CH CHORD DISTANCE
- U.E. UTILITY EASEMENT
- P.S.M. PROFESSIONAL SURVEYOR AND MAPPER
- PERMANENT REFERENCE MONUMENT (P.R.M.) "L.B.2936"
- CHANGE OF DIRECTION PER EVERGRENE P.C.D. PLAT TWO
- CHANGE OF DIRECTION PER THIS PLAT
- (NR) NON RADIAL LINE
- (TYP) TYPICAL
- ① 10' UTILITY EASEMENT (EVERGRENE P.C.D. PLAT TWO)
- ② 20' SEWER LINE EASEMENT (EVERGRENE P.C.D. PLAT TWO)
- ③ 5' UTILITY EASEMENT (EVERGRENE P.C.D. PLAT TWO)
- ④ 5' SEWER LINE EASEMENT (EVERGRENE P.C.D. PLAT TWO)
- ⑤ ROADWAY, DRAINAGE, WATER, SEWER AND UTILITY EASEMENT (EVERGRENE P.C.D. PLAT TWO)
- ⑥ 20' DRAINAGE EASEMENT (EVERGRENE P.C.D. PLAT TWO)
- ⑦ 20' DRAINAGE EASEMENT AND 20' WATER MAINTENANCE ACCESS EASEMENT (EVERGRENE P.C.D. PLAT TWO)
- ⑧ DENOTES A 6"11" BUILDING SETBACK IS REQUIRED FROM THIS LOT LINE

*NOTE: ALL LOT LINES ARE RADIAL UNLESS OTHERWISE SPECIFIED.



WEST LINE OF EAST 1/2 OF SECTION 25-41-42
MILITARY TRAIL (120' R/W)
(O.R.B. 2353, PG. 1542)

24
25

NORTH LINE OF SECTION 25-41-42
DONALD ROSS ROAD
(DEED BOOK 1031, PAGE 628)

22' PEDESTRIAN ACCESS EASEMENT (P.B. 95, PAGE 29)
12' SEACOAST UTILITY AUTHORITY U.E. (O.R.B. 10031, PAGE 1290)
4' F.P.L. EASEMENT (O.R.B. 518, PAGE 733)

30' PEDESTRIAN ACCESS EASEMENT

EVERGRENE PARKWAY
(TRACT R-2)
(PLAT BOOK 95, PAGE 29)

TRACT B-7
(PLAT BOOK 95, PAGE 29)

TRACT C-3
(PLAT BOOK 95, PAGE 29)

TRACT B-7
(PLAT BOOK 95, PAGE 29)

TRACT C-15
(PLAT BOOK 95, PAGE 29)

TRACT F-9
(PLAT BOOK 95, PAGE 29)

TRACT C-10
(PLAT BOOK 95, PAGE 29)

UPLAND PRESERVE TRACT 1

OPEN SPACE TRACT 3

TRACT "S-1"

OPEN SPACE TRACT 2
SEE DETAIL THIS SHEET

UPLAND PRESERVE TRACT 1

BLOCK E

BLOCK E

TRACT C-10
(PLAT BOOK 95, PAGE 29)

BLOCK E

TRACT "S-1"

SEE SHEET No. 4 OF 6

INDEX SHEET MAP
1 INCH = 600 FEET

DETAIL
OPEN SPACE TRACT 2
1 INCH = 50 FEET

Keshavarz & Associates, Inc.
CONSULTING ENGINEERS - SURVEYORS
711 N. Dixie Highway, Suite 201
West Palm Beach, Florida 33401
Tel: (561) 689-8600 Fax: (561) 689-7476 LB 4897
THIS INSTRUMENT WAS PREPARED BY MANUEL A. GUTIERREZ, PSM
PROFESSIONAL SURVEYOR AND MAPPER NO. 4102
IN THE OFFICES OF KESHAVARZ & ASSOCIATES, INC.
\\KAF\S\SUN755_PLAT16\940755_PLAT_Sht3_3-6-03.dwg 03/07/03 02:09:39 PM EST